



VEERAMACHANENI PADDAYYA  
SIDDHARTHA PUBLIC SCHOOL  
(by Siddhartha Academy of General & Technical Education)

PERIODIC TEST - I

Maximum marks : 40  
Time allowed : 1 ½ hours

Class: X  
Subject: Social Studies

SET - I

Date : 10-07-24

**General instructions**

1. The question paper comprises of six sections - A, B, C, D, E and F. There are 19 questions in the Question paper. All questions are compulsory.
2. Section A - From questions 1 to 10 are MCQs of 1 mark each.
3. Section B - Question no. 11 to 12 are Very Short Answer Type Questions, carrying 2 marks each. Answer to each question should not exceed 40 words.
4. Section C contains Q.13 to Q.15 are Short Answer Type Questions, carrying 3 marks each. Answer to each question should not exceed 60 words.
5. Section D - Question no. 16 to 17 are long answer type questions, carrying 5 marks each. Answer to each question should not exceed 120 words.
6. Section-E - Questions no 18 is case based questions with three sub questions and are of 4 marks each. Answer to each question should not exceed 100 words.
7. Section F - Question no. 19 is map based, carrying 3 marks
8. In addition to this, separate instructions are given with each section and question, wherever necessary.

**Section A - MCQs (1X20=20)**

1. In which of the following states is overgrazing responsible for land degradation?  
(a) Jharkhand and Orissa (b) Madhya Pradesh and Rajasthan  
(c) Punjab and Haryana (d) Kerala and Tamil
2. When running water cuts through clayey soils and makes deep channels, they lead to:  
(a) Gully erosion (b) Sheet erosion  
(c) Deforestation (d) Afforestation
3. Two statements are given below as Assertion (A) and Reason (R) Read the statements and choose the appropriate option  
Assertion (A) : Sri Lanka emerged as an independent country in 1950  
Reason (R) : The leaders of the Sinhala community sought the secure dominance over government by virtue of the majority  
(a) Both A and R true and R is the correct explanation to A.  
(b) Both A and R are true but R is not the correct explanation of A  
(c) A is true but R is false  
(d) A is false but R is true
4. Who elects the community government in Belgium?  
(a) People belonging to one language community only (b) By the leader of Belgium  
(c) The citizens of the whole country (d) The community leaders to Belgium
5. What is 'Liberalism' stand for since the French revolution ?  
(a) Freedom for the individual (b) Equality before law  
(c) End of autocracy and clerical privileges (d) Freedom of markets
6. What happened when the news of the events in France reached the different cities of Europe?  
A. There was a turmoil in Europe  
B. the people did not know how to react  
C. students and other members of educated middle classes began setting up Jacobin clubs  
D. there was confusion and dissatisfaction in the cities
7. Which Institution publishes Human Development Report?  
(a) UNDP (b) world bank (c) IMF (d) WHO
8. While averages are useful for comparison they also hide \_\_\_\_\_
9. Development of a country can generally be determined by \_\_\_\_\_  
(a) Per capita income (b) Average literacy level

10. \_\_\_\_\_ indicates the number of children that die before the age of one year as a proportion of 1000 live children born in that particular year
- (a) Gross Infant Mortality Rate (b) Infant Mortality Rate  
(c) Net Infant Mortality Rate (d) Gross Enrollment Ratio

**Section B – Answer the following questions (2X2=4M)**

11. Prove that development for some may be harmful to others.  
12. Resource planning is a complex process'. Explain.

**Section C – Answer the following questions (3X3=9M)**

13. Which is the most widespread and important soil of India? Mention its important characteristics.  
14. Examine the consequences of Sinhala supremacy  
15. How was the Habsburg empire a patch work of many different regions and people in Europe ?

**Section D – Answer the following questions (2X5=10M)**

16. Analyse the measures and practices introduced by the French revolutionaries to create sense of collective identity among the French people?  
17. Give an assessment of the power sharing arrangements made in Belgium.

**Section E – Source base Question (1X4=4M)**

18. A girl expects as much freedom and opportunity as her brother, and that he also shares in the household work. Her brother may not like this. Similarly, to get more electricity, industrialists may want more dams. But this may submerge the land and disrupt the lives of people who are displaced – such as tribals. They might resent this and may prefer small check dams or tanks to irrigate their land. So, two things are quite clear: one, different persons can have different developmental goals and two, what may be development for one may not be development for the other. It may even be destructive for the other.

- (i) To get electricity Industrialists may want more \_\_\_\_\_  
(a) Factories (b) Agriculture  
(c) Dams (d) Infrastructure
- (ii) When land submerges it affects the life of \_\_\_\_\_  
(a) Farmers (b) Tribals  
(c) Landless people (d) All of the above
- (iii) Different people can have  
(a) Same goals (b) Different Goals  
(c) similar goals (d) None of the above
- (iv) Write one development goal of landless rural labor

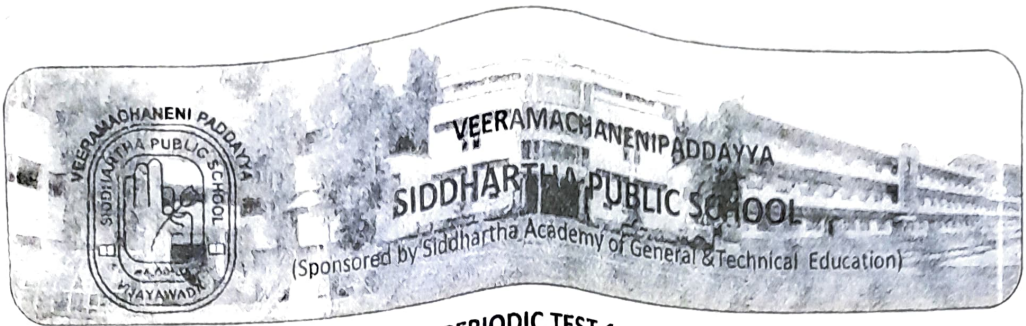
**Section F – Map base Question (3X1=3M)**

19. On the given political map of India Identify the soils.

# India Political Maps







**PERIODIC TEST-1  
JULY, 2024**

**SUBJECT: ARTIFICIAL INTELLIGENCE (Code-417)  
EXAMINATION**

CLASS: X

DATE: 13-07-2024

Marks: 20 M

TIME: 1 Hr

- Instructions:**
1. Read and Answer all the questions carefully.
  2. Maintain good handwriting.
  3. Answer all the questions in the answer sheet only.
  4. This Paper consists of one printed page

**SECTION- A**

7 x 1 = 7M

**I. OBJECTIVE TYPE QUESTIONS**



1. Identify the symbol used for Visual Communication  
(a) Under Construction (b) Railway Crossing (c) No Entry
2. You cannot park your car anywhere \_\_\_\_\_ this building for security reasons  
(a) from (b) for (c) around
3. Which of the following is not an element of communication within the communication process cycle?  
(a) Time (b) Channel (c) Receiver
4. Tom is a student of grade five. He likes to move around the class. He enjoys playing basket ball and is even good at playing a Guitar. Which of the following intelligence does he demonstrate?  
(a) Linguistic (b) Kinesthetic (c) Logical-Mathematical
5. What is not AI?  
(a) A self-driving car (b) A fully automatic washing machine (c) A Humanoid
6. **Statement I:** In Deep Learning, the machine is trained with huge amounts of data  
**Statement II:** Everything which is Machine Learning is also Deep Learning  
(a) Both the Statements I and II are correct  
(b) Only Statement II is correct  
(c) Only Statement I is correct
7. \_\_\_\_\_ is the phenomenon of machine learning algorithms producing unfair or distorted results due to human biases in the data or the algorithm.

**SECTION- B**

5 X 2 = 10 M

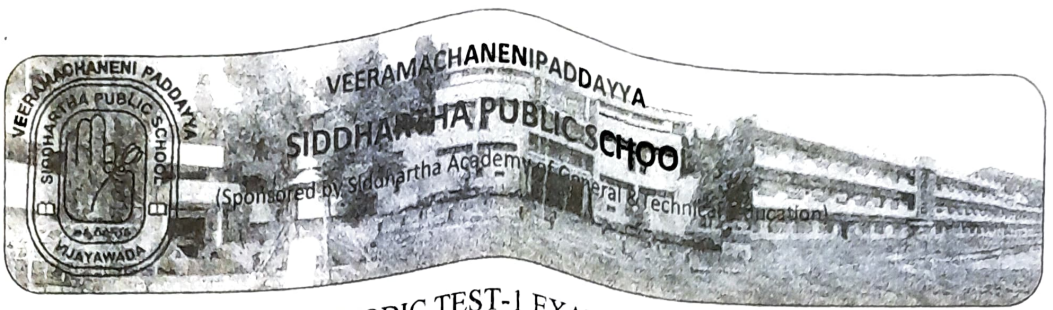
**II. SHORT ANSWERS QUESTIONS**

1. Write about any two types of Verbal Communication by giving an example for each.
2. Write about Natural Language Processing (NLP) providing two real time application examples.
3. Define the following terms a) AI Ethics b) AI Access
4. Write about any two applications of Artificial Intelligence around us.
5. Define the term Artificial Intelligence as given by NITI Aayog,

**III. LONG ANSWERS QUESTION**

1 X 3 = 3 M

1. What are the three Domains of AI and explain with an application for each?



PERIODIC TEST-1 EXAMINATION  
SUBJECT: SCIENCE(SET\_A)

CLASS: X  
DATE:11-06-2024

MARKS:40  
TIME:1½Hrs

**I. CHOOSE THE CORRECT ANSWER**

[5x1=5M]

1. A piece of aluminium wire having length 'l' and diameter 'd' is to be used as a wire of minimum resistance. So, its length and diameter should be

- a) l, d      b) 2l, d      c) 2l, d/2      d) l/2, 2d.

2. Rahul took some zinc granules in a test tube and added dil. HCl to it. Which characteristics of Chemical reaction has observed in the above reaction.

- (i) Formation of precipitate (ii) Change in temperature  
(iii) Evolution of gas (iv) Nothing is observed

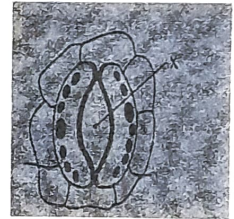
a) i&ii   b) ii&iv   c) ii&iii   d) All the above

3. Which of the following reactions is an endothermic reaction?

- (a) Burning of coal  
(b) Decomposition of vegetable matter into compost  
(c) Process of respiration  
(d) Decomposition of calcium carbonate to form quick lime and carbon dioxide.

4. If the structure marked X in the diagram is blocked, then which of the following processes will not occur?

- (A) Transpiration and respiration  
(B) Transpiration, Photosynthesis and Respiration  
(C) Respiration, Transpiration and Transportation.  
(D) Respiration and Photosynthesis.



**5. In which of the following groups of organisms are food materials broken down outside the body and absorbed?**

- (a) Mushroom, green plants, amoeba (b) Yeast, mushroom, bread mould  
(c) Paramecium, amoeba, cuscuta (d) Cuscuta, lice, tapeworm

**ASSERTION AND REASONING:**

[3X1=3M]

DIRECTION : The following question consist of two statements - Assertion (A) and Reason (R). Answer these questions selecting the appropriate option given below:

- (a) Both A and R are true and R is the correct explanation of A.  
(b) Both A and R are true but R is not the correct explanation of A.  
(c) A is true but R is false.  
(d) A is false but R is true.

6. **Assertion(A):** Alloys are commonly used in electrical iron, toasters etc.  
**Reason(R):** Alloys do not oxidise readily at high temperature.
7. **Assertion(A):** Photosynthesis is considered as an endothermic reaction.  
**Reason(R):** Energy gets released in the process of photosynthesis.
8. **Assertion (A):** Rings of cartilage are present around the trachea.  
**Reason (R) :** These ensure that the air-passage collapse.

[6X2=12M]

**II ANSWER THE FOLLOWING QUESTIONS**

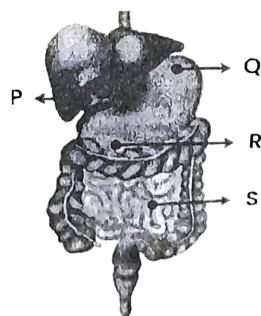
9. i) Define S.I unit of resistance.  
 ii) When a 4V battery is connected across an unknown resistance, there is a current of 100mA in the circuit. Calculate its resistance.
10. i) Calculate the time taken for a charge of 240C to flow through an electric circuit if the current through it is 200mA.  
 ii) Mention the condition when charge can move in a conductor. Draw the symbol of the device used for this purpose.
11. A solution of potassium chloride when mixed with silver nitrate solution, an insoluble white substance is formed. Write the chemical reaction involved and also mention the type of the chemical reaction?
12. State reasons for the following:  
 (i) Potato chips manufacturers fill the packet of chips with nitrogen gas.  
 (ii) Iron articles are shining when new, but get coated with a reddish-brown powder, when left for some time.
13. 'X' is a wild animal which eats only flesh of other animals whereas 'Y' is a domestic animal which feeds mainly on green grass. Which animal, X or Y, has a longer small intestine? Why reason.
14. How are lungs designed in human beings to maximize the area of exchange of gases?

**III. ANSWER THE FOLLOWING QUESTIONS [4X3=12M]**

15. i) State the law that gives the relationship between potential difference and current flowing through it.  
 ii) Express the law both by a mathematical formula and by a graph.  
 iii) How can we calculate resistance from the graph?  
 iv) Draw circuit diagram to verify the law.
16. Write the balanced chemical equation for the following and identify the type of reaction in each case.  
 (a) Potassium bromide (aq) + Barium iodide (aq) → Potassium iodide (aq) + Barium bromide(s)  
 (b) Zinc carbonate (s) → Zinc oxide (s) + Carbon dioxide (g)  
 (c) Hydrogen (g) + Chlorine (g) → Hydrogen chloride (g)
17. 2g of Ferrousulphate crystals are heated in a dry boiling tube.  
 a) List any two observations.  
 b) write balanced chemical equation for the reaction.  
 c) Name the products formed during the chemical reaction.

18. The diagram below shows the human alimentary canal . P,Q,R,S are four different organs that are the parts of the canal.

- a) Identify the parts Q,R.  
 b) Write one function of each P,Q,R,S.





#### IV. Case study:

[2X4=8M]

19. The opposition offered by a material to the flow of electrons through it is called resistance of the material. The resistivity of a conductor is independent of its dimensions. Resistivity of insulator is greater than that of an alloy.

1. Define resistivity and write its S.I unit. 1m
2. Two wires A and B of same material, having 0.3mm and 0.2mm respectively, are connected one by one in a circuit. Which wire will offer higher resistance? Justify your answer. 1m
3. Resistance of a conductor of length 2m and cross – sectional area of  $1\text{mm}^2$  is  $8\Omega$ . Calculate the specific resistance of the conductor. 1m
4. A wire of resistivity  $1.86 \times 10^{-6} \Omega \text{ m}$  is pulled to double its length. Calculate its resistivity. 1m

20. The food material taken in during the process of nutrition is used in cells to provide energy for various life processes. Diverse organisms do this in different ways – some use oxygen to break-down glucose completely into carbon dioxide and water, some use other pathways that do not involve oxygen. In all cases, the first step is the break-down of glucose, a six-carbon molecule, into a three-carbon molecule called pyruvate. This process takes place in the cytoplasm.

1. List out the products obtained by anaerobic respiration in plants.
2. Name the substance which build up in the muscles during vigorous physical exercise.
3. In which form our body uses energy?
4. Why there is a faster breathing rate of aquatic animals than in the terrestrial animals?



**PERIODIC TEST-1**  
**SET-1**  
**MATHEMATICS (STANDARD)**

CLASS : X

MARKS : 40

DATE : 08-07-24

TIME :  $1\frac{1}{2}$  hrs

1. ANSWER THE FOLLOWING MULTIPLE CHOICE QUESTIONS :

[10 X 1 = 10]

1. If 3 is the least prime factor of a number a and 7 is the least prime factor of number b, then the least prime factor of (a+b) is  
 a) 2                                      b) 3                                      c) 5                                      d) 10
2. The ratio of HCF to LCM of the least composite number and least prime number is  
 a) 1 : 2                                      b) 2 : 1                                      c) 1 : 1                                      d) 1 : 3
3. If  $\alpha$  and  $\beta$  are the zeros of the polynomial  $x^2 - 1$ , then the value of  $(\alpha + \beta)$  is  
 a) 2                                      b) 1                                      c) -1                                      d) 0
4. If one zero of the polynomial  $6x^2 + 37x - (k-2)$  is reciprocal of the other, then what is the value of k ?  
 a) -4                                      b) -6                                      c) 6                                      d) 4
5. The pair of linear equations is consistent then their graph lines will be  
 a) parallel                                      b) always coincident                                      c) always intersecting                                      d) intersecting or coincident
6. The point of intersection of the line represented by  $3x - y = 3$  and y-axis is given by  
 a) (0,-3)                                      b) (0,3)                                      c) (2,0)                                      d) (-2,0)
7. If the equation  $25x^2 - kx + 9 = 0$  has equal roots, then  
 a)  $k = \pm 30$                                       b)  $k = \pm 25$                                       c)  $k = \pm 9$                                       d)  $k = \pm 34$
8. If the sum of the roots of the quadratic equation  $kx^2 + 6x + 4k = 0$  is equal to the product of its roots, then  
 a)  $k = \frac{-3}{2}$                                       b)  $k = \frac{3}{2}$                                       c)  $k = \frac{2}{3}$                                       d)  $k = \frac{-2}{3}$
9. The roots of the equation  $ax^2 + bx + c = 0$  will be reciprocal of each other if  
 a)  $a = b$                                       b)  $b = c$                                       c)  $c = a$                                       d) none of these
10. Assertion (A):  $3 \times 5 \times 7 + 7$  is a composite number.  
 Reason (R): A Composite number has factors one, itself and any other natural number.  
 a) Both Assertion (A) and Reason (R) are true Reason (R) is the correct explanation of Assertion (A).  
 b) Both Assertion(A) and Reason(R) are true but Reason(R) is not the correct explanation of Assertion(A).  
 c) Assertion (A) is true but Reason (R) is false.  
 d) Assertion (A) is False but Reason (R) is True.



II. ANSWER THE FOLLOWING QUESTIONS :

[2 X 2 = 4]

11. For what value of  $k$  does the system of equations  $x + 2y = 3$ ,  $5x + ky + 7 = 0$  have no solution ?  
12. Find the roots of the quadratic equation  $x^2 + 11x - 152 = 0$  by factorization.

III. ANSWER THE FOLLOWING QUESTIONS :

[4 X 3 = 12]

13. If  $m$  and  $n$  are zeroes of the polynomial  $3x^2 - x - 2$ , find the values of the following without factorizing the polynomial i)  $\frac{1}{m} + \frac{1}{n}$  ii)  $m^2 + n^2$   
14. Solve:  $2x + 5y = 8/3$ ,  $3x - 2y = 5/6$ .  
15. Find two consecutive positive integers whose squares have the sum 85.  
16. Find HCF and LCM of 396, 1080 and verify  $\text{HCF} \times \text{LCM} = \text{product of given numbers}$ .

IV. ANSWER THE FOLLOWING QUESTIONS :

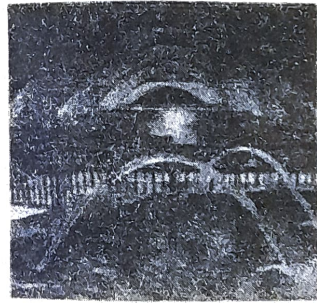
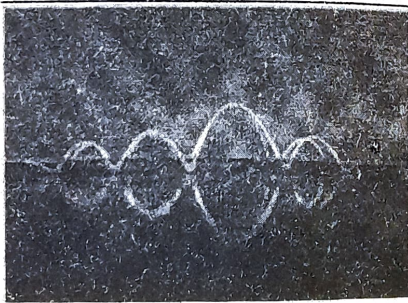
[2 X 5 = 10]

17. Find a fraction which becomes  $\left(\frac{1}{2}\right)$  when 1 is subtracted from the numerator and 2 is added to the denominator and the fraction becomes  $\left(\frac{1}{3}\right)$  when 7 is subtracted from the numerator and 2 is subtracted from the denominator.  
18. Prove  $\sqrt{2}$  is irrational. Also prove  $5 + 3\sqrt{2}$  is irrational.

V. CASE- STUDY BASED QUESTION:

[1 X 4 = 4]

19. The below pictures are few natural examples of parabolic shape which is represented by a quadratic polynomial. A parabolic arch is an arch in the shape of a parabola. In structures, their curve represents an efficient method of load, and so can be found in bridges and in architecture in a variety of forms.



Based on the above information, answer the following questions .

- i) If  $\alpha$  and  $\frac{1}{\alpha}$  are the zeroes of the quadratic polynomial  $2x^2 - x + 8k$ , then find the value of  $k$ .  
ii) If the sum of roots is  $-p$  and product of roots is  $\frac{-1}{p}$ , then find the quadratic polynomial.  
iii) Write the zeroes of the polynomial  $p(x) = 4x^2 - 4x + 1$ .



PT-1 JULY-2024-25

SUBJECT: ENGLISH LANGUAGE & LITERATURE

CLASS: X

MARKS: 40

DATE: 9.7.2024

TIME: 1 ½ Hr

**General Instructions:**

(1) The Question Paper contains THREE sections – Reading, Grammar & Writing and Literature.

(2) Attempt questions based on specific instructions for each part.

**READING (10 Marks)**

**1. Read the passage given below.**

1. “Teenagers? Stress? You must be joking.” This is probably the reaction when asked whether teenagers get set full and apprehensive. For, it is generally believed that they have “no responsibilities no worries and no duties”. But that is not true.

2. In today’s competitive world, one needs to struggle and fight to make it in this dynamic, yet uncertain environment that is both stressful and anxiety inducing. The pressure to perform that is to do well academically comes principally from parents, teachers and peers.

3. The lack of aptitude tests or respecting the students’ preferences push them into fields which do not interest them or for which they are not equipped. Apart from the pressure to perform well, they are often burdened with the pressure to conform to the norms laid down by society. Next, teenagers are pressurized to reform themselves. This is commonly experienced especially by students in the age group of 13 to 17 years. Everybody is telling them when to wake up and what to do. Here’s what you can do to deal with these pressures. As a result of pressure, teenagers are often found to be very anxious. A sign of anxiety is holding one’s breath. The easy way out to take deep breaths at regular intervals, trying to calm your mind.

4. Modern life’s competitiveness and challenges put a tremendous load of work on teenagers. They need to understand that they are strong enough to handle the tough challenges in life, studying and assignments being two of them. Procrastinators that is people who habitually delay and postpone due to their work, need to cultivate, “the art of starting;” and this involves dealing with the minor discomfort experienced while beginning a task. Once a job has started, it is much easier to continue.

5. Some students worry about factors like social and financial status, intelligence and habits that might make them different from their peers. Effective stress management lies in having a healthy attitude towards competition, work, friends and acquaintances. It lies in taking life as it comes, doing your best and being prepared for the worst.

**On the basis of your reading of the above passage, answer the following questions by choosing the most appropriate answer. (10x1=10)**

i. What kind of pressures are faced by teenagers?

- pressure to do well academically.
- present to confirm to the norms laid down by the society.
- pressure to reform themselves.
- all of the above.

- 2
- ii. Choose the option that lists the correct answers for the following.
1. Ajay is 13 years old boy who is taking up small taking courses as he wants to persuade the cooking career.
  2. Rajan is 15 years old boy who is always into books and has frequent breakdowns.

- a) both are under stress of competition
- b) both Ajay and Raja are devoid of stress
- c) Ranjit he stressed while Ajay is enjoying life
- d) Ajay is stressed while Rajan is enjoying his life.

- iii. Which of the following factors become sources of worry for many students?
1. social status
  2. actual status
  3. intelligence
  4. habit
  5. Career
  6. relationships
- (a) 1 and 5    (b) 2, 4 and 6    (c) 3 and 5    (d) All of these

- iv. Who are 'procrastinators'?
- a) people who do their work on time
  - b) people who did who do their work before time
  - c) people who never do their work
  - d) people who have actually postpone during their work.

- v. The word 'truthful' in the passage means
- a) Excited
  - b) Feeling Joy
  - c) Feeling distressed
  - d) Dull

- vi. The word 'anxiety' in para 2 means
- a) Being calm
  - b) A troubled state of mind
  - c) Behaving properly
  - d) Being serious

- vii. In the line "...fretful and apprehensive", apprehensive does not correspond with
- a) Anxious
  - b) Understanding
  - c) Fidgety
  - d) Uneasy

- viii. The pressures faced by the teenagers come from
- a) Teachers
  - b) Friends
  - c) Parents
  - d) All the above

- ix. Why does parents push students into field that does not suit them?
- a) The desire for easy success
  - b) Lack of career counselling
  - c) Lack of aptitude tests
  - d) The need to follow a stable career

- x. The author of the given passage is trying to \_\_\_\_\_ the students.
- a) Amuse
  - b) Encourage
  - c) Inform
  - d) Scare

## SECTION – B GRAMMAR & CREATIVE WRITING SKILLS

### Writing (5 Marks)

2. There is a garbage bin near your school gate. Most of the time it is overflowing. During the rainy season it stinks and invites a lot of flies. All this affects the healthy atmosphere of the school. Imagine that you are Rohit/Ragini, the Principal of Sunflower School, Mayur Vihar, Agra. Write a letter in 100-120 words, to the Municipal Commissioner, Agra Municipal Corporation requesting him either to ensure regular cleaning or to get the bin removed to some other place.



**GRAMMAR (5 Marks)**

3. Fill in the blanks with suitable option of modals. (5x1=5)

(a) Karina's engagement ring is enormous! It \_\_\_\_\_ have cost a fortune.

- (i) may
- (ii) might
- (iii) can
- (iv) must
- (v) none of these

(b) Rohan \_\_\_\_\_ the movie before he read the review.

- i) watches
- ii) have watched
- iii) had watched
- iv) was watching

(c) A bouquet of flowers \_\_\_\_\_ required for the event.

- i) are
- ii) have
- iii) has
- iv) is

(d) Choose the correct option to report the following sentence:

*Rama said to Mohit "Don't go to market now".*

- i. Rama asked Mohit that don't go to market then.
- ii. Rama asked Mohit not to go to market then.
- iii. Mohit asked Rama to not go to market then.
- iv. Rama asked Mohit to go to market then.

(e) Read the given sentence from a recipe review article. Identify the error and supply the correction in the sentence.

*This delightful recipe must keep your hunger pangs at bay with its balanced spices and oriental flavour.*

Use the given format for your response.

<b>error</b>	<b>correction</b>
--------------	-------------------

**LITERATURE - 20 MARKS**

4. Read the extract given below and answer the questions that follow. (3x1=3)

*"And did you cut down on the sweet things as I told you?  
Oh I did for a bit, but he seemed to be so weak had to relent. He does love cream cakes and chocolates so I can't bear to refuse him. I looked down again at the little dog. That was the trouble. Tricky's only fault was greed."*

1. Tricky falls ill because \_\_\_\_\_.
2. How would you describe the vet?
3. What is the meaning of the word 'relent'?

5. Read the extract given below and answer the questions that follow. (3x1=3)

*Some say the world will end in fire,  
Some say in ice.  
From what I've tasted of desire  
I hold with those who favor fire.*

4  
But if it had to perish twice,  
I think I know enough of hate  
To say that for destruction ice Is also great  
And would suffice.

1. What is the symbolism used in the poem.
2. The poem is a \_\_\_\_\_, put across by the poet.
  - a) powerful warning
  - b) heart-felt apology
  - c) earnest appeal
  - d) vengeful threat
3. Identify the most likely tone of the poet in the lines-

'To say that for destruction ice/Is also great'.

- a) sarcastic
- b) serious
- c) amused
- d) celebratory

**6. Answer any three questions out of four in 40-50 words. (3X3=9)**

1. What did Nelson Mandela pledge when he was sworn in as President?
2. Explain why the Tiger ignores the visitors at the zoo?
3. What do you think prompted the narrator to act like "an obedient child"? (The Black Aeroplane)
4. What is a 'bearhug' is? How is it used in the poem?

**7. Answer any one out of two questions [100-120 words] (1x5=5)**

Hari Singh didn't board the express and returned to Anil. Why did he return? On what values does this incident put light on?

**Or**

Bring out Lencho's immense faith in God.

-----



VEERAMACHANENIPADDAYYA  
SIDDHARTHA PUBLIC SCHOOL  
(Sponsored by Siddhartha Academy of General & Technical Education)

PERIODIC TEST -I, JULY 2024-2025  
SUBJECT -TELUGU (Set-A)

Class: X

Time: 1½ hr.

Date: 12.07.24

PART - A

Marks: 40

1. ఈ క్రింది ఆపరిచిత గద్యమును చదివి, అడిగిన ప్రశ్నలకు సరియైన సమాధానములను గుర్తించి వ్రాయుము. 5x1=5

ఆధునిక వచన సాహిత్యంలో బహు జనాదరణ పొందిన ప్రక్రియ కథానిక. స్వయంసంపూర్ణత, నిర్భరత, దీని ప్రత్యేక లక్షణాలు. సంక్షిప్తత అనగా కథా వస్తు సంగ్రహాల కలిగినదని అర్థం. అనగా సంఘటనలు, పాత్రలు, సంవాదములు మున్నగు వానిలో సంక్షిప్తత కనిపించవలెను. అనావశ్యకముగు విస్తృతికి పోకుండా చెప్పవలసినది వీలైనంత తక్కువలో చెప్పు నేర్పును రచయిత చూపవలెను. అట్టి కథనములో ఏ ఒక్క అంశము కొరవడినట్లు ఉండకూడదు. కథాసంవిధానంలో మొదటి నుండి చివరి వరకు ఒకే ఒక ప్రధానాంశమును ఆశ్రయించుకొని రచన కొనసాగవలెను. ఇదియే ఏకాంశవ్యగ్రత. రచయిత లక్ష్యము నెరవేరునట్లు కథానిక సంపూర్ణమై ఉండవలెను. రచనలో పాఠకుడు నిమగ్నుడగునట్లు చేయు లక్షణమే నిర్భరత. కథనము, వర్ణనము, వాతావరణము, శైలి, పాత్రలు, సంవాదములు ఈ లక్షణములను పోషించును. ఆఖ్యాయిక, కథ, ఖండ కథ, పరికథ, కథానిక - అని గద్యకావ్యములు ఐదు విధములని అగ్నిపురాణములోను, ధ్వన్యావలోకనములోనూ చెప్పబడినది. దీనిలో కథావిస్తృతిని బట్టి ఆఖ్యాయిక అన్నిటిలో పెడదానియు, కథానిక చిన్నదనియు చెప్పవచ్చును. కథానికకు "చిన్న కథ" అని నామాంతరము. కానీ సాధారణముగా కథ, కథానిక, చిన్నకథ అను మూడింటిని సమానార్థకములుగా వాడుట పరిపాటి. కానీ కథ అను పదమునకు ప్రయోగ విస్తృతి ఎక్కువ.

ప్రశ్నలు

1. ఆధునిక వచన సాహిత్యంలో ఏడు పొందిన ప్రక్రియ ఏది?

- క) ఆఖ్యాయిక                      గ) వర్ణనము                      చ) పాత్రలు                      జ) లక్ష్యము

2. గద్యకావ్యముల గురించి దీనిలో ప్రస్తావించబడినది ?

- క) అగ్నిపురాణము                      గ) ధ్వన్యావలోకనము                      చ) సై రెండూ                      జ) విష్ణుపురాణం

3. పాఠకుడు అనగా అర్థం ఏమిటి?

- క) పాటలు పాడేవాడు                      గ) అడేవాడు                      చ) వర్తకుడు                      జ) చదివేవాడు

4. గద్యకావ్యములు ఎన్ని?

- క) చతుర్థములు                      గ) పంచమములు                      చ) ద్వితీయములు                      జ) షష్ఠములు

5. అనావశ్యకత----- ఈ పదానికి వ్యతిరేక పదాన్ని గుర్తించుము.

- క) అనాలోచన                      గ) అవశ్యకత                      చ) విష్ణుయోజనము                      జ) ఆశ్రయము



PART - B

II. బహుళవిక ప్రశ్నలు

2x1=2

A.సంధులు

1. ఏదాది శబ్దంబులకు "ఆలు" శబ్దంబు పరంబగునపుడు కర్మధారయంబునందు రుగాగమంబగు - ఈ సూత్రానికి తగిన

ఉదాహరణను గుర్తించి వ్రాయుము.

క) వైద్యురాలు

గ) కొమరాలు

చ) దీరురాలు

జ) శిష్యురాలు

2. సంస్కృత ప్రాకృత తుల్యంబగు భాష -----

క) తర్జమము

గ) తద్భవము

చ) రామ్యము

జ) దేశ్యము

2x1=2

B. ఛందస్సు

3. గణము అనగా ----- సముదాయము.

క) గురువు

గ) లఘువు

చ) గురులఘువులు

జ) ఏదీకాదు

2. ఉత్పలమాలలో చరుసగా వచ్చే గణములు ఏవి?

క) న, ఙ, ఛ, జ, ష, ష, ర

గ) ఛ, ఛ, న, ఛ, ఛ, ఛ, ర, వ

చ) మ, స, ఛ, జ, స, త, త, గ

జ) స, ఛ, ర, న, మ, య, వ

2x1=2

C. సమాసములు

5. ద్వంద్వ సమాస లక్షణము -----

క) అన్య పదార్థ పదార్థ ప్రాధాన్యము

గ) సంఖ్యా ప్రాధాన్యము

చ) ఉభయ పద ప్రాధాన్యము

జ) అన్నీ సరైనవే

6. బహుపద ద్వంద్వ సమాసమునకు ఉదాహరణను గుర్తింపుము.

క) దీని కరసుధాకరులు

గ) కాసల్యసుమిత్రులు

చ) కుకపికబకములు

జ) క, గ సరైనవి

2x1=2

D. పర్యాయపదములు

7. అంబుదము:- క) మేఘము-మబ్బు

గ) ఆకాశము-నేల

చ) వాయువు-భూమి

జ) ఏదీ కాదు

8. ఎలుక:- క) గజము-కూరము

గ) మూపికము-అఱువు

చ) గుర్రము-అశ్వము

జ) కుకము-పికము

III. ఈ క్రింది జాతీయాలకు అర్థం వ్రాసి వాక్య ప్రయోగం చేయుము.

2x1=2

1. ఆట్టహాసంగా

2. ఆట పట్టించు

IV. ఈ క్రింది సామెతలకు తగిన వినరణను వ్రాయుము.

2x1=2

1. కోటి విద్యలు కూటి కొరకే

2. రెక్కాడితే గాని డొక్కాడదు

PART - C

- V. ఈ క్రింది గద్య భాగ ప్రశ్నకు సమాధానమును వ్రాయుము. 1x4=4
- 1."దన్నుడు"- పాఠ్యాశం ఆధారంతో మంధరుని మాటలను మీరు సమర్థిస్తారా ?
- VI. 1."అన్యతమాడుట కంటి మోనమే మేలు"---- ఈ వాక్యానికి సందర్భ సహిత వ్యాఖ్యను వ్రాయుము. 1X3=3
- VII.ఈ క్రింది పద్యభాగ ప్రశ్నకు సమాధానమును వ్రాయుము. 1x4=4
- 1."మాతృభావన" - పాఠం ఆధారంగా సోస్తేపుని వ్యక్తిత్వాన్ని విశ్లేషించుము.
- VIII. "మాతా! తప్పు సైరింపువీ! ---- దీనికి సందర్భ సహిత వ్యాఖ్యను వ్రాయుము 1X3=3
- IX. ఈ క్రింది పద్యమునకు కవి పరిచయము,సందర్భము,ప్రతిపదార్థము,తాత్పర్యమును వ్రాయుము. 1x6=6
- అనుచున్ జేవురు మీరు కన్నుంగవతో నాస్పందితోష్ణంబుతో  
ఘన హుంకారముతో నటద్దుక్కుటితో గర్జిల్లు నా భోస్ సలే  
శునిం జూడన్ బుయిలోడేం గొల్పు; శివుండీసున్ గుత్తుకన్ బ్రొంగి,బో  
రన నవ్వారల బంధమూడ్చి గొనితేరన్ బంచె ఎన్ఓఎన్ దేవునిన్
- X. ఈ క్రింది ఉపవాచక ప్రశ్నలలో ఒక దానికి సమాధానమును వ్రాయుము. 1X3=3
- 1.రామలక్ష్మణులు విశ్వామిత్రుని యాగాన్ని సంరక్షించిన వృత్తాంతాన్ని వివరింపుము.
2. వాల్మీకి మహర్షి రామాయణ రచనకు శ్రీకారం చుట్టిన కారణాలను విశదీకరింపుము.

\*\*\*\*\*



प्रथम अवधिक परीक्षाएँ (PT-1) - 2024-25 DATE: 12/07/24

कक्षा 10<sup>th</sup> IND LANG विषय हिन्दी (SET-1) समय 1 1/2 HR अंक 40

नीचे दिए गए अनुच्छेद को ध्यानपूर्वक पढ़कर निम्नलिखित प्रश्नों के उत्तर दीजिए:

जन्मदोष में गंध सबसे बुद्धिहीन समझा जाता है हम जब किसी आदमी को पहने दर्जे का बेवकूफ कहना चाहते हैं तो उसे गंध कहते हैं। गंध सचमुच बेवकूफ है या उसकी सीधेपन, उसकी विनम्र सहिष्णुता से उसे यह पदवी दे दी है। इसका निश्चय नहीं किया जा सकता। गाँव सींग मारने है। ब्याँह हुई गंध से अनायास ही सिंहनी का रूप धारण कर लेती है। कुत्ता भी बहुत गरीब जन्मदा है। लेकिन कभी-कभी उसे भी क्रोध आ ही जाता है। लेकिन गंध को कभी क्रोध करते नहीं घुम न देखे। जिनका चहरे उसे मारो, चाहे जैसी खराब सड़ी हुई घास सामने डाल दो, उसके चेहरे पर कभी असंतोष की छया भी न दिखाई देगी। वैशाख में चाहे एकाध बार कुलेल कर लेता हो पर हमने तो उसे कभी खुश होते नहीं देखा। उसके चेहरे पर एक स्थायी विषाद छाया रहता है।

मुठ्ठ-मुठ्ठ हन्ति-राम किसी दशा में भी उसे बदलते नहीं देखा। ऋषि-मुनियों के जितने गुण हैं वह सभी उसमें परकाष्ठ को पहुँच गए हैं, पर आदमी उसे बेवकूफ कहता है। सदगुणों का इतना अनादर नहीं देखा। कठचित्त सीधेपन संसार के लिए उपयुक्त नहीं है।

- लेखक यह निश्चय नहीं कर पाता कि गंध बेवकूफ है या सीधा क्योंकि उसके अनुसार - 1M
  1. गंध अपने-पराये की भावना से परे है
  2. गंध क्रोध व कुलेल नहीं करता है
  3. गंध सीधा व सहिष्णु होता है
  4. गंध के चेहरे पर हर्ष व विषाद होता है
- गंध में ऋषि-मुनियों के कौन-कौन से गुण देखने को मिलते हैं? 1M
  1. जन्मदा करना
  2. समानता का भाव
  3. असंतोष की भावना
  4. कुलेल करना
- सीधेपन संसार के लिए उपयुक्त नहीं है। लेखक का यह कथन व्यक्त करता है कि- 1M
  1. उनका गंध के प्रति गहरा लगाव है।
  2. समाज में गंध को भी स्थान मिलना चाहिए
  3. गंध निरपवाद सहिष्णु, सीधा-सादा होता है।
  4. वे सदगुणों के अनादर के लिए चिंतित है
- "उसके चेहरे पर एक स्थायी विषाद छाया रहता है।" - आशय स्पष्ट कीजिए। 2M

2. आप विद्यालय के प्रमुख छात्र/छात्रा विराट शर्मा/ मिथिला राज हैं। आपके विद्यालय में कैंटीन की समुचित व्यवस्था नहीं है। विद्यालय की प्रधानाचार्य से इस समस्या का समाधान करने की प्रार्थना करते हुए आवेदन पत्र लिखिए: 5M

(या)

आपके क्षेत्र में तीन दिन से लगातार वर्षा हो रही है। इससे जलभराव की समस्या उत्पन्न हो गई है। इन समस्या की ओर ध्यान आकृष्ट कराने के लिए नगरपालिका अधिकारी को पत्र लिखिए।

3. आप अपने विद्यालय की छात्र संस्था के सचिव हैं तथा विद्यालय में आयोजित 'चित्रकला प्रतियोगिता' में छात्रों को आमंत्रित करते हुए सूचना तैयार कीजिए। 4M

(या)

अपनी कॉलेज में रियासती दर पर कोरोना वैक्सीन इंजेक्शन का निर्णय सदर लायंस पंजाबी बाग, दिल्ली द्वारा लिया गया है। अपनी कॉलेज के सूचनापट्ट पर लिखने के लिए एक सूचना आलेख तैयार कीजिए।

4. दिए गए मुहावरों के अर्थ लिखकर वाक्य प्रयोग कीजिए: 4×1=4M
  1. छोटो मुँह बड़ी बात
  2. प्राण सूखना
  3. ऐरे-गैरा नलू खैरा
  4. गिरह बाँधना



5. निम्नलिखित पठित पद्य प्रश्नों के उत्तर देने के लिए उचित विकल्प का चयन कीजिए : 5M

- कबीर के अनुसार कौन ज्ञानी नहीं बन पाया ?
  - मोटी पुस्तकें पढ़ने वाला
  - दूसरों को ज्ञान देने वाला
  - सन्यास ग्रहण करने वाला
  - अपनी प्रशंसा करने वाला
- दीपक दिखाई देने से अंधेरा कैसे मिटा जाता है ?
  - जो स्वार्थी से ऊपर हो जाने पर
  - बादलों से छट जाने पर
  - अहंकार रूपी माया के दूर हो जाने पर
  - अकारण चिंता न करने पर
- कबीर ने राम और कस्तूरी में क्या समानता बताई है ?
  - दोनों वन में रहते हैं
  - दोनों तरल पदार्थ हैं
  - दोनों सुगंधित हैं
  - दोनों भीतर स्थित हैं
- निम्नलिखित कथन ( A ) और कारण ( R ) को ध्यानपूर्वक पढ़िए । उसके बाद दिए गए विकल्पों में एक सही विकल्प चुनकर लिखिए ।

कथन ( A ) : केवल किताबें पढ़ने वाला ही विद्वान होता है ।

कारण ( R ) : ईश्वर प्रेम ही एक सत्य है, इसे जानने वाला ही वास्तविक ज्ञानी है ।

- कथन ( A ) गलत तथा कारण ( R ) सही है ।
- कथन ( A ) सही है लेकिन कारण ( R ) गलत है ।
- कथन ( A ) सही है और कारण ( R ) उसके सही व्याख्या करता है ।
- कथन ( A ) सही है और कारण ( R ) उसकी गलत व्याख्या करता है ।
- जब मैं था तब हरि नहीं - इसमें "मैं" किसका प्रतीक है ?
  - मैं - अपनापन की भावना
  - मैं - अहंकार का प्रतीक है ।
  - मैं - मुझे नहीं मिले
  - मैं - मैं था किन्तु हरि नहीं थे ।

6. निम्नलिखित पठित पद्य प्रश्नों के उत्तर देने के लिए उचित विकल्प का चयन कीजिए : 5M

- किस मामले में बड़े भाई साहब जल्दबाजी से काम लेना पसंद नहीं करते थे ?
  - खेलकूद में
  - पढ़ाई में
  - भोजन करने में
  - आराम करने में
- लेखक की स्वयं के विषय में क्या धारणा बन्न गई थी ?
  - वह बिना पढ़े भी प्रथम आया
  - वह कक्षा में फेल ही होगा
  - वह अंग्रेजी कभी पढ़ नहीं पाएगा
  - वह बड़े भाई साहब की बराबरी कर पाएगा
- बड़े भाई साहब के अनुसार जीवन की समझ कैसे आती है ?
  - संघर्ष करने से
  - अनुभव से
  - पढ़ने से
  - उपरोक्त सभी
- भाई साहब किस कला में निपुण थे ?
  - संगीत कला
  - चित्रकला
  - शिल्प कला
  - उपदेश कला
- निम्नलिखित कथ्यों को ध्यानपूर्वक पढ़ें -
  - बड़े भाई परीक्षा में पास हो गए थे ।
  - बड़ी भाई साहब परीक्षा में फेल हो गए थे ।
  - महज इम्तिहान पास कर लेना कोई चीज नहीं, असल चीज है- बुद्धि का विकास ।
  - छोटा भाई फेल हो गया ।

उचित विकल्प का चुनाव करें -

- केवल 1
- केवल 4 सही है
- 2 और 3 दोनों सही है
- कोई नहीं है

7. निम्नलिखित पठित पद्य से 3 प्रश्नों में से 2 प्रश्नों के उत्तर लिखिए :  $2 \times 3 = 6$

- मीठी वाणी बोलने से औरों को सुख और अपने तन को शीतलता कैसे प्राप्त होती है ?
- कबीर के अनुसार सच्चा ज्ञान क्या है ?
- 'एकै अषिर पीव का, पढ़ै सु पंडित होइ' - इस पंक्ति द्वारा कवि क्या कहना चाहता है ?

8. निम्नलिखित पठित पद्य से 3 प्रश्नों में से 2 प्रश्नों के उत्तर लिखिए :  $2 \times 3 = 6$

- बड़े भाई साहब के अनुसार जीवन की समझ कैसे आती है ?
- छोटे भाई ने अपनी पढ़ाई का टाइम-टेबिल बनाते समय क्या-क्या सोचा और फिर उसका पालन क्यों नहीं कर पाया ?
- बड़े भाई की स्वभावगत विशेषताएँ बताइए ।